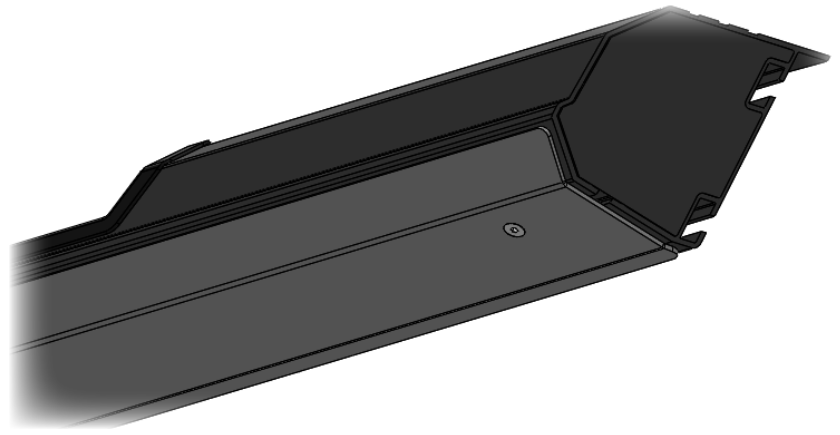




ARMOR LITE SERIES

JK/JL

**JEEP JK/JL ARMOR LITE SKID
PLATE PAIR**



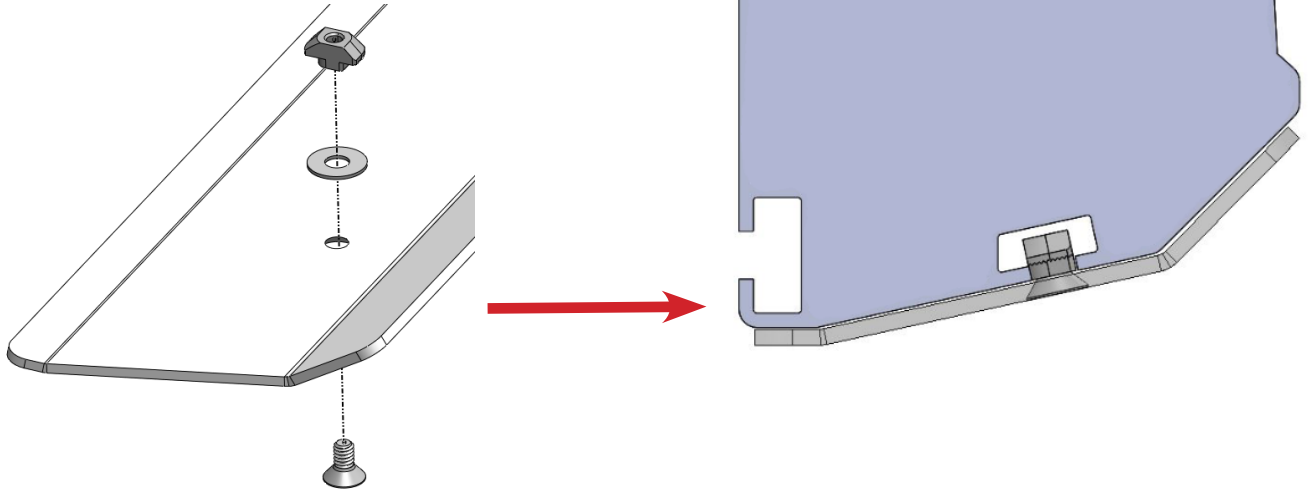
WEB LINK: <http://lodoffroad.com/assets/pdfs/JSP1860 JK JL Armor Lite Skid Plate Pair.pdf>

***VERIFY YOU HAVE ALL THE COMPONENTS BEFORE STARTING THE INSTALLATION. REFER TO THE
ENGINEERING DRAWINGS AT THE END OF THIS DOCUMENT FOR A COMPLETE PARTS LIST***



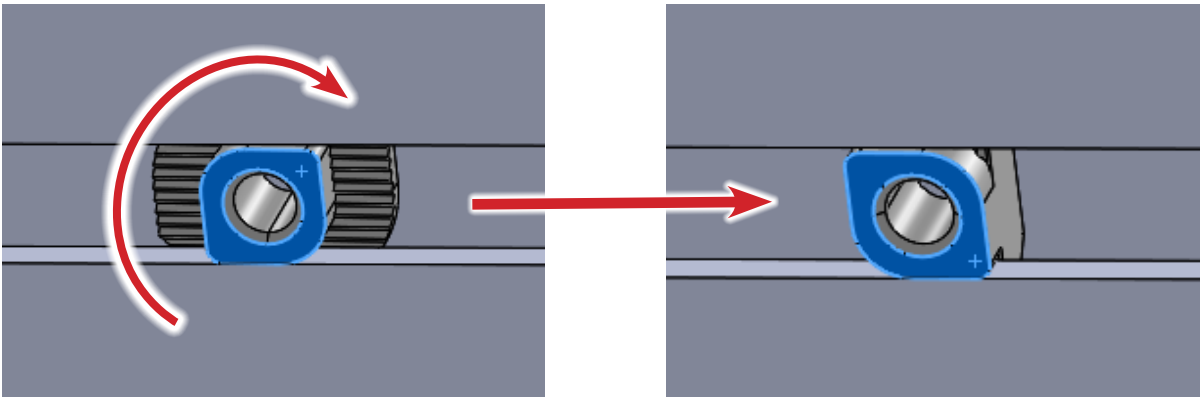
Loosely assemble the supplied Flat Head Screw and T-Nut into all 4 positions on the Armor Lite Skid Plate as shown.

Position the Skid Plate on the Armor Lite Slider so the T-Nuts are inserted into the T-Slot on the bottom of the Slider.



Using a Allen wrench, turn each Flat Head Screw 90° clockwise so that the shoulder on the T-Nut catches on the T-Slot as shown below.

With the T-Nut in this position, you will be able to fully tighten the Flat Head Screws.



The Skid Plate should now be able to hang loosely on the bottom of the Slider.

Position the Skid Plate forward or backward as needed to center it on the bottom of the Slider, then fully tighten each screw equally.

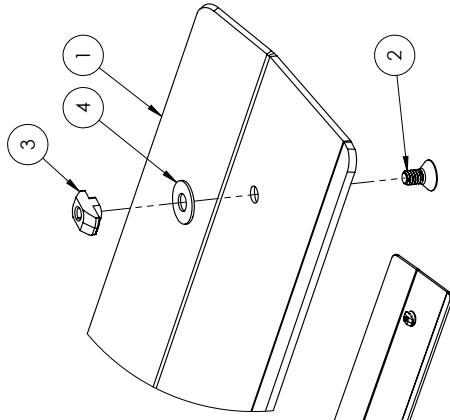
****Maintenance****

- Periodically check and re-tighten all fasteners.
- Periodically check your Armor Lite Skid Plate for scratches or dings which can happen over time or after heavy use or highway driving. It is important to address these areas as soon as possible to prevent flaking and corrosion or rust from spreading. We recommend using Rustoleum® brand Black Semi-Gloss Protective Enamel (oil based). Remove loose powder coating, sand the area and clean using alcohol. Apply using a foam brush by dabbing to match the powder coat texture.



ITEM NO.	PART NUMBER	DESCRIPTION	QTY.
1	2JSP1860-01	JK/JL ROCK SLIDER SKID PLATE 4DR	2
2	FHSCS142008CZ	FHSCS 1/4-20 X .50 CZ	8
3	TN2520-1	T-NUT 1/4-20, DROP IN, ZINC PLATE	8
4	FW2512ZP	FLAT WASHER Ø1/4" X .75 ZINC PLATE	8

JK / JL INDICATOR



NOTES:
 1. JSP1860 = BARE STEEL
 2. JSP1861 = BLACK POWDER COAT

UNLESS OTHERWISE SPECIFIED:	NAME	DATE
DRAWN	MCH	1/21/2022
CHECKED		
ENG APPR.		
MEG APPR.		
MATERIAL:	N/A	
FINISH:	SEE NOTES	
PROPERTY OF LOD LLC. ANY REPRODUCTION IN PART OR AS A WHOLE WITHOUT THE WRITTEN PERMISSION OF LOD LLC IS PROHIBITED.		

LOD LLC.	DESCRIPTION:
	JEEP JL 4DR ARMOR LITE SKID PLATE
DWG. NO.	JSP1860
	JSP1861
SCALE:	1:6
SHEET SIZE:	B
	SHEET 1 OF 1

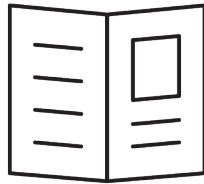




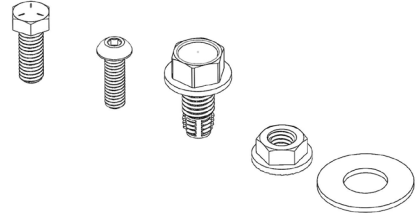
JK/JL Jeep
ARMOR LITE SERIES
SKID PLATE PAIR
SHIPPING SHEET

Packaged by:

On:



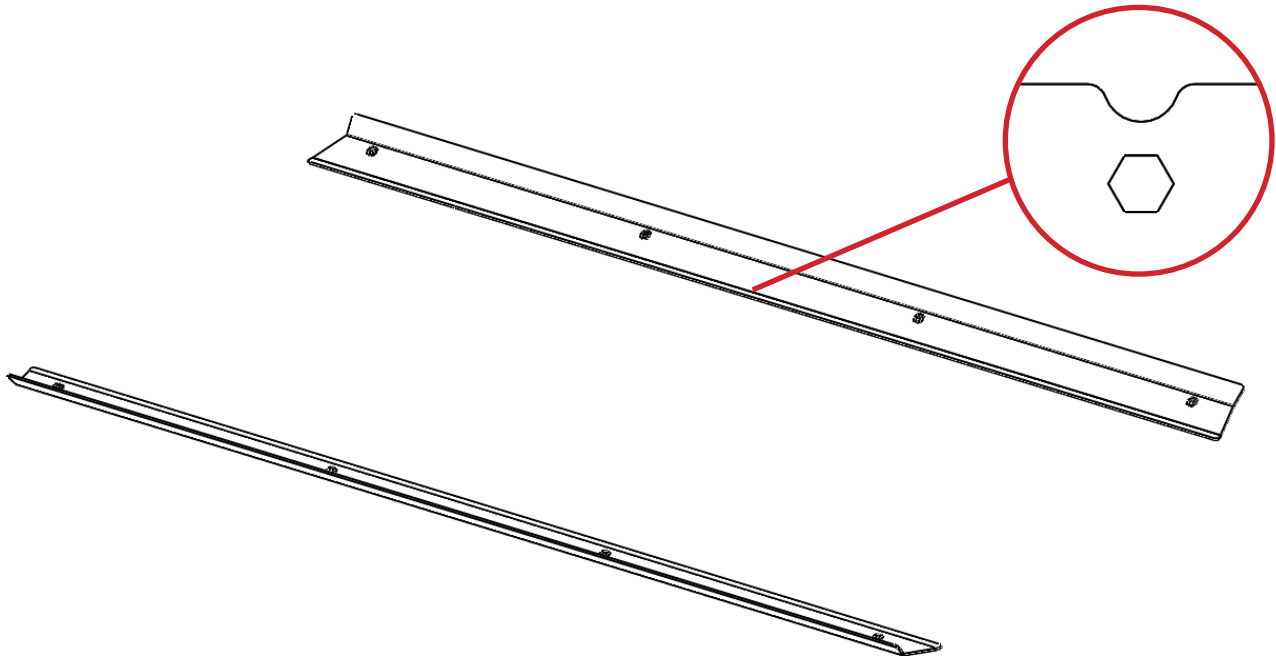
Instruction
Booklet



BOLT KIT
(may vary)



JK / JL INDICATOR



JK/JL ROCK SLIDER SKID
PLATE 4DR
2JSP1860-01
(x2)

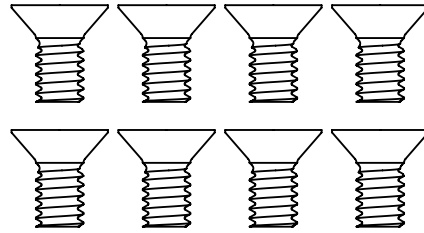




JK/JL Jeep
ARMOR LITE SERIES
SKID PLATE PAIR
BOLT KIT

Packaged by:

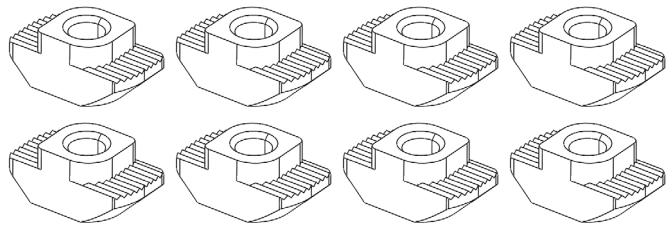
On:



1/4-20 X .50" FLAT HEAD CAP SCREW

(94222)

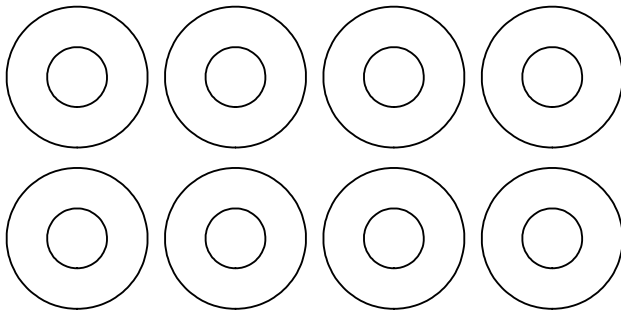
(x8)



DROP IN T-NUT 1/4-20

(0961746) (13120)

(x8)



WASHER Ø1/4" X .75

(33004)

(x8)

